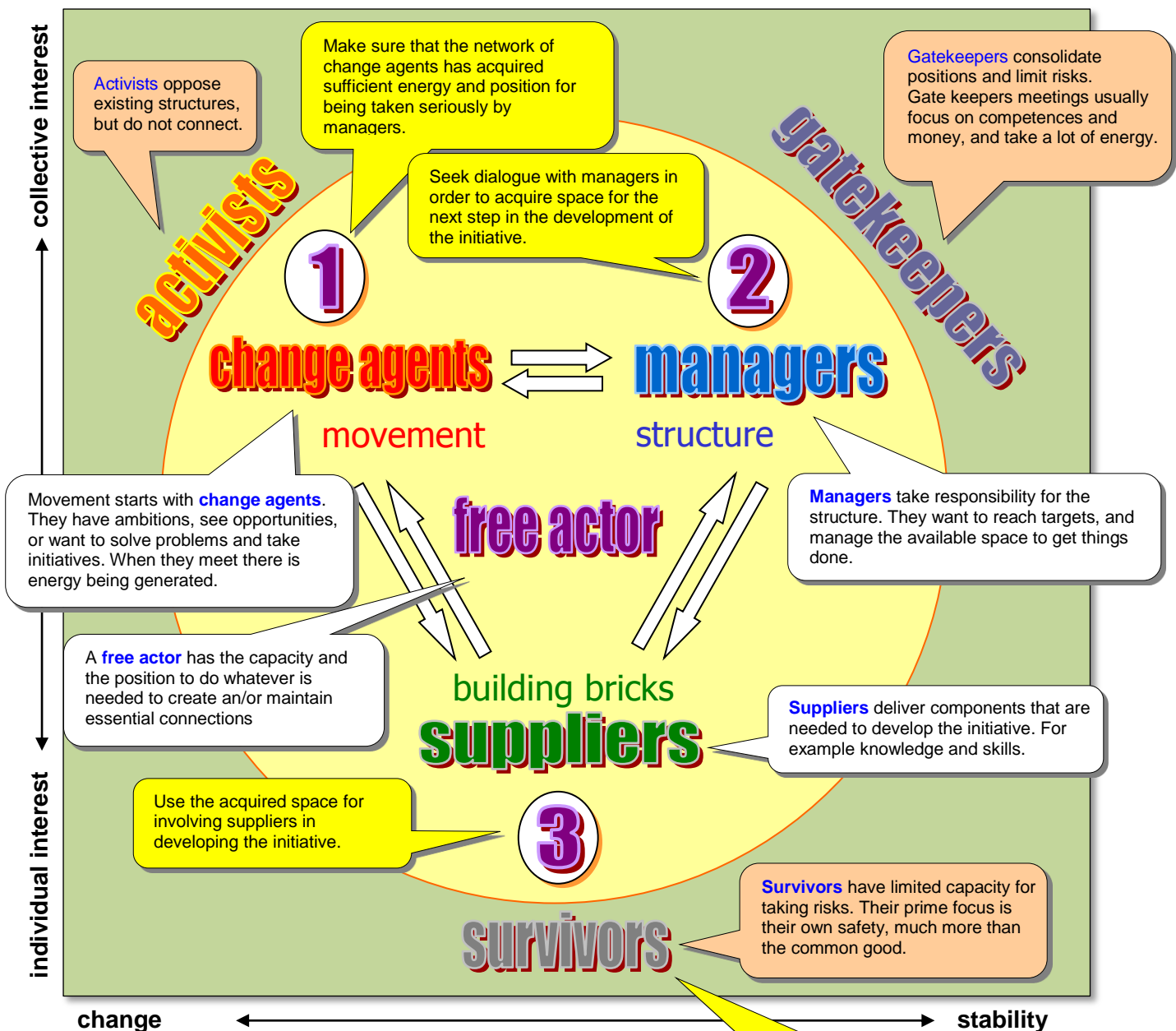


The Triangle of Co-Creation

The Triangle of Co-Creation visualises positions people take regarding the **initiative** and the existing **structure**. Co-creation requires actors in complementary positions.



Questions for specific cases:

- [1] Which roles are being performed by actors involved?
- [2] Which positions do they hold in the formal structure?
- [3] Who act as survivors, from whom no contribution should be expected in the short run?
- [4] Does the network of change agents have sufficient energy and position to enter into communication with gatekeepers?
- [5] Who takes the role of the Free Actor?
- [6] What could be the next step in the initiative?

Only ask survivors to contribute when it is clear to them that their position is not at risk. However, their opinion on what could go wrong is already valuable from the beginning.

In earlier versions this model was called the **advanced Triangle of Change** or the **Triangle of Change 2.0**.